



TRAVERSE 2016

CHEVROLET



FIND *NEW* ROADS™



facebook.com/
chevroletcanada



twitter.com/
chevroletcanada



youtube.com/
chevroletcanada

CHEVROLET.CA



Traverse LTZ in Siren Red Tintcoat
(extra-cost colour).

**EVERYBODY IN:
THE 2016 TRAVERSE IS HERE.**

With a boldly styled exterior designed around a rich and refined interior, Chevrolet Traverse invites you in. Traverse offers seating for up to eight,¹ best-in-class maximum cargo space,² ingenious safety technology and upscale features like an available built-in 4G LTE³ Wi-Fi[®] hotspot.⁴ No wonder Traverse was named a 2015 Most Popular Vehicle on Edmunds.com.

¹ Standard on LS and 1LT. Available on 2LT. LTZ shown seats 7.
² Based on WardsAuto.com 2015 Large Cross/Utility Vehicle segment and latest competitive information available at time of printing. Excludes other GM models. ³ Visit onstar.ca for coverage maps, details and system limitations. Services vary by model, conditions and geographical and technical restrictions. OnStar with 4G LTE connectivity is available on select vehicle models and in select markets. Available Wi-Fi hotspot requires a data plan. ⁴ Devices must be WPA2 compliant. Wi-Fi devices manufactured prior to 2006 may not be compatible. Please consult your device manufacturer for information regarding the WPA2 security protocol and Wi-Fi device compatibility. Vehicle must be started or in accessory mode to access Wi-Fi. Visit onstar.ca for system details and limitations.

FIND *NEW* ROADS™

EXTERIOR DESIGN

*“With only the largest of the large SUVs offering more room,
the Traverse is a standout in its class.”*
–Edmunds.com



Traverse LTZ in Siren Red Tintcoat
(extra-cost colour).

INTERIOR DESIGN



Traverse LTZ in Tungsten Metallic with Ebony/Saddle Up interior and available features.

SEATING FOR UP TO EIGHT. Choose standard seating for eight with second- and third-row flat-folding 60/40 split-bench seats (standard on LS and 1LT, available on 2LT). Or you can opt for 7-passenger seating with second-row flat-folding captain's chairs (standard on 2LT and LTZ).

SO MUCH ROOM IT FILLS COMPETITORS WITH ENVY. With 3294 L (116.3 cu. ft.) of maximum cargo space¹ and 691 L (24.4 cu. ft.) behind the third row,¹ Traverse is best-in-class.²

AN OPEN-AND-SHUT CASE. With a simple touch of your key fob, the available power-remote liftgate opens to make loading and unloading smooth and easy.

THE SCIENCE OF QUIET. Traverse features a tuned Acoustic Insulation Package with sound-blocking materials for a remarkably hushed ride.



1



2



3

INSPIRING DESIGN, INVITING APPOINTMENTS, INGENIOUS FEATURES.

1. For your viewing pleasure, a dual SkyScape® power front sunroof and fixed rear skylight with sunshade is available on LT and LTZ models.
2. Enjoy premium soft touch materials and subtle ambient lighting on LTZ models.
3. With a single hand movement, the Smart Slide® second-row seat slides out of the way for unobstructed access to the third-row bench seat.

¹ Cargo and load capacity limited by weight and distribution.
² Based on WardsAuto.com 2015 Large Cross/Utility Vehicle segment and latest competitive information available at time of printing. Excludes other GM models.



Traverse LTZ interior in Ebony/
Saddle Up with available features.

RICH REFINEMENTS. LTZ amenities include heated/cooled driver and front passenger seats, a heated steering wheel and tri-zone automatic climate controls.

PREMIUM LEATHER APPOINTMENTS. Leather-appointed first- and second-row seats with perforated inserts are standard on LTZ.

ACOUSTIC PERFECTION. The 10-speaker Bose® premium sound system (standard on 2LT and LTZ) is engineered specifically to the acoustics of the Traverse cabin.

TRAVEL GUIDES. Get directions with OnStar Turn-by-Turn Navigation (included for the first six months)¹ Or opt for the available Chevrolet MyLink^{®2} with Navigation,³ which offers full GPS navigation features plus 2-D/3-D maps, points of interest, and SiriusXM NavTraffic⁴ with a 3-month trial subscription.

A REFRESHING CONCEPT. Enjoy the convenience of 10 cupholders in 7-passenger models and 12 with 8-passenger seating.

¹ Visit onstar.ca for coverage map. Services vary by model.
² Full functionality requires compatible Bluetooth and smartphone, and USB connectivity for some devices. MyLink on Traverse does not include Gracenote functionality. ³ At the time of printing, detailed map coverage is available for most urban areas of the United States and for certain metropolitan areas of Canada (Vancouver, Calgary, Edmonton, Winnipeg, Windsor, London, Toronto, Ottawa, Montreal, Quebec City and Halifax). Coverage is significantly limited outside these areas. ⁴ Available in 10 Canadian provinces and the 48 contiguous United States. Subscription sold separately after trial period. If you decide to continue your service at the end of your trial subscription, the plan you choose will automatically renew and bill at then-current rates until you call 1-877-209-0079 to cancel. Other fees and taxes will apply. All fees and programming subject to change. See SiriusXM "Terms & Conditions" and complete details at siriusxm.ca.



CONFIDENT, CONNECTED, COVERED. THAT'S TRAVERSE TECHNOLOGY.

1. The standard rear vision camera uses the 165 mm (6.5 in.) diagonal colour touch-screen to show the area behind your Traverse when backing up.
2. Download the OnStar RemoteLink^{®1} and myChevrolet² mobile apps to remotely connect to your Traverse.
3. A rear-seat DVD player with overhead display is available on LT and LTZ models.



STAY CONNECTED. With available Chevrolet MyLink,³ you can handle calls, play music and access contacts from your compatible smartphone simply by touching the 165 mm (6.5 in.) diagonal colour touch-screen or through voice commands.

BLUETOOTH CALLING. Bluetooth[®] wireless technology⁴ and steering wheel controls let you make, answer and end phone calls without ever taking your hands off the wheel.

SIRI EYES FREE⁵ Keep your hands on the wheel and your eyes on the road while you access your compatible iPhone.[®] Just connect your iPhone to your Chevrolet MyLink³ Radio using Bluetooth wireless technology.⁴

¹ Available on select Apple, Android, BlackBerry and Windows devices. Requires an active OnStar service plan. Services vary by device, vehicle, conditions and the type of service plan you have. Please visit onstar.ca for vehicle availability, system limitations, geographical and technical restrictions and further details. ² Requires Apple or Android platform. ³ Full functionality requires compatible Bluetooth and smartphone, and USB connectivity for some devices. Traverse does not include Gracenote functionality. ⁴ Visit chevrolettotalconnect.ca to find out which phones are compatible with the vehicle. ⁵ Requires available Chevrolet MyLink and compatible iPhone running iOS 6 or later.



TECHNOLOGY

CONNECT UP TO SEVEN DEVICES
WITH AVAILABLE BUILT-IN 4G LTE WI-FI.

Traverse LTZ in Siren Red Tintcoat
(extra-cost colour).



AVAILABLE INTERNET IN YOUR TRVERSE. Chevrolet is the first and only car company to offer built-in 4G LTE¹ Wi-Fi[®] to cars, trucks and crossovers, providing the ability to seamlessly connect your smart devices and vehicles to the Internet²

THE ULTIMATE BUILT-IN WI-FI HOTSPOT. After initial setup, whenever your vehicle is on, available OnStar 4G LTE Wi-Fi is automatically on too. It offers great signal quality and bandwidth for up to seven devices.²

FAST, EASY, RELIABLE. The strong signal delivers a fast, reliable connection. It's automatically on after initial setup and ready to connect to your mobile devices.²

¹ Visit onstar.ca for coverage maps, details and system limitations. Services vary by model, conditions and geographical and technical restrictions. OnStar with 4G LTE connectivity is available on select vehicle models and in select markets. Available Wi-Fi hotspot requires data plan. ² Devices must be WPA2 compliant. Wi-Fi devices manufactured prior to 2006 may not be compatible. Please consult your device manufacturer for information regarding the WPA2 security protocol and Wi-Fi device compatibility. Vehicle must be started or in accessory mode to access Wi-Fi. Visit onstar.ca for details and system limitations.

SAFETY



OVERALL VEHICLE
SCORE FOR SAFETY.¹

— U.S. NATIONAL HIGHWAY TRAFFIC SAFETY ADMINISTRATION (NHTSA)

REAR VISION CAMERA When travelling in reverse at low speeds, the rear vision camera provides a real-time picture of the area immediately behind your Traverse on the 165 mm (6.5 in.) diagonal colour touch-screen display.

FRONT CENTRE SIDE-IMPACT AIRBAG The available industry-first Front Centre Airbag³ deploys from the right side of the driver seat and positions itself between the front seats for added cushioning and restraint to help protect the driver and passenger from colliding with one another in the event of a side-impact collision.



AVAILABLE AUTOMATIC CRASH RESPONSE⁴ In a crash, built-in sensors can alert a specially trained OnStar Advisor who is connected into your Traverse to see if you need help – even if you can't ask for it. Advisors can use GPS technology to pinpoint your location and request emergency help. OnStar⁵ Guidance Plan is standard for six months.

STABILITRAK[®] ELECTRONIC STABILITY CONTROL SYSTEM This innovative safety technology is designed to improve vehicle stability on most road surfaces, especially during emergency manoeuvres and difficult driving conditions.

Traverse LTZ in Silver Ice Metallic with available features.

Travel with confidence in the 2016 Traverse LTZ. Ingenious patented safety technology provides peace of mind as it makes every drive more enjoyable.

LANE DEPARTURE WARNING. If you unintentionally drift out of your lane (without activating the turn signal), this camera-based technology sends an alert. The camera, mounted near the interior rear-view mirror, reads traffic lane markings when identifiable and provides audible and visual alerts (standard on LTZ).

SIDE BLIND ZONE ALERT. With radar sensors on both sides of the vehicle, Side Blind Zone Alert² helps to “look” for other vehicles in your exterior side mirror blind zones and indicates their presence with LED-lit symbols in the exterior mirrors (standard on LTZ and available on 2LT).

FORWARD COLLISION ALERT. This safety feature identifies vehicles ahead and alerts the driver to any potential front-end crash risks, helping provide time to stop and/or change course (standard on LTZ).

REAR CROSS TRAFFIC ALERT. Using the same radar sensors as the Side Blind Zone Alert² system, this available feature alerts you to crossing traffic behind your Traverse when backing up. Audible warnings, as well as visual alerts on the rear vision camera screen, are triggered if approaching vehicles are detected (standard on LTZ and available on 2LT).

SAFETY STARTS WITH YOU. Safety features are no substitute for the driver’s responsibility to operate the vehicle in a safe manner. The driver should remain attentive to traffic, surroundings and road conditions at all times. Read the vehicle Owner’s Manual for more important safety information.

¹ U.S. Government 5-Star Safety Ratings are part of the National Highway Traffic Safety Administration’s (NHTSA’s) New Car Assessment Program (www.SaferCar.gov). ² Before making a lane change, always check the Side Blind Zone Alert display, check the exterior and interior rear-view mirrors, look over your shoulder for vehicles and hazards and start the turn signal. ³ A NOTE ON CHILD SAFETY: Always use safety belts and the correct child restraint for your child’s age and size, even with airbags. Even in vehicles equipped with the Passenger Sensing System, children are safer when properly secured in a rear seat in the appropriate infant, child or booster seat. Never place a rear-facing infant restraint in the front seat of any vehicle equipped with an active frontal airbag. See your vehicle Owner’s Manual and child safety seat instructions for more safety information. ⁴ Visit onstar.ca for vehicle availability, details and system limitations. OnStar acts as a link to existing emergency service providers. Not all vehicles may transmit all crash data. ⁵ Visit onstar.ca for coverage maps, details and system limitations. Services vary by model, conditions and geographical and technical restrictions. OnStar with 4G LTE connectivity is available on select vehicle models and in select markets. Customers will be able to access OnStar services only if they accept the OnStar User Terms and Privacy Statement and Software Terms. OnStar acts as a link to existing emergency service providers. Not all vehicles may transmit all crash data. After the trial period (if applicable), an active OnStar service plan is required.

PERFORMANCE

ENJOY THE POWER OF EFFICIENCY.

Traverse LTZ in Tungsten Metallic
with available features.

REVVED UP. With more horsepower and torque than Toyota Highlander,¹ Traverse lets you make the most out of every journey — and enjoy every minute of it. The catalyst is a spirited yet efficient direct injected 3.6L V6 engine that offers a winning combination of up to 288 horsepower and a highway fuel efficiency rating of 10.8 L/100 km.²

TONS OF TOWING POWER. A properly equipped Traverse can tow up to 2359 kg (5200 lb.).³ That's capability unrivaled by any Ford Explorer or Toyota Highlander.¹

ALL-WHEEL-DRIVE CONFIDENCE. Available all-wheel drive helps maintain sure-footed traction in all types of weather and road conditions. The tuned 4-wheel independent suspension delivers confident response and an ultra-smooth ride.

¹ Based on latest competitive information available at time of printing. ² 2016 Traverse AWD fuel consumption rating based on GM testing in accordance with Government of Canada approved test methods. Refer to vehicles.nrcan.gc.ca for details. Your actual fuel consumption may vary. ³ Requires available Trailer Towing Package. Before you buy a vehicle or use it for trailering, carefully review the Trailering section of the Owner's Manual. The weight of passengers, cargo and options or accessories may reduce the amount you can tow.



We're with you all the way. Chevrolet Complete Care reflects our commitment to you and your new Traverse. Please visit [chevrolet.ca](#) or see your dealer for full details.

| YOUR COMPREHENSIVE OWNER BENEFIT PROGRAM. |
|--|
| 2-year/40,000 km ¹ Complimentary Oil Changes ² |
| 3-year/60,000 km ¹ New Vehicle Limited Warranty |
| 5-year/160,000 km ¹ Powertrain Component Limited Warranty, with \$0 deductible on repairs and the warranty is fully transferable at no charge |
| 5-year/160,000 km ¹ Courtesy Transportation |
| 5-year/160,000 km ¹ 24/7 Roadside Assistance |
| 6-year/160,000 km ¹ rust-through perforation coverage |
| 8-year/130,000 km ¹ coverage on catalytic converters and Powertrain Control Modules (PCMs) |
| OnStar ³ Guidance Plan for 6 months, including Automatic Crash Response, Stolen Vehicle Assistance, Roadside Assistance and Turn-by-Turn Navigation (trial excludes Hands-Free Calling minutes) |
| OnStar Basic Plan ⁴ for 5 years on most Chevrolet vehicles, including limited OnStar RemoteLink [®] Mobile App services. |

OTHER OWNERSHIP PRIVILEGES AND PROGRAMS⁵

- GM Protection Plan (GMPP) — the only extended service plan backed by the resources and commitment of General Motors, GMPP may be purchased at the time of sale or subsequently during the New Vehicle Limited Warranty period.
- Chevrolet Certified Service — to help your Chevrolet vehicle live up to its performance promise, Chevrolet Certified Service — found exclusively at your Chevrolet dealer — is there. With all the engineering excellence in your vehicle, GM-trained technicians have the expertise to care for all of it.
- Chevrolet Owner Centre — as an owner, take advantage of the Chevrolet Owner Centre. This online owner's destination gives you access to contests, current offers and the latest driving and maintenance tips. Find out more at [chevroletowner.ca](#).

TO HELP YOU PURCHASE OR LEASE A NEW VEHICLE

- Purchase Financing and Leasing — on-the-spot financing; see dealer for full details.⁶
- GM Student Bonus Program — students or recent graduates of high school, college or university⁶ may be entitled to receive a Student Bonus Vehicle Redemption Allowance of \$500 or \$750⁵ (tax inclusive) (purchased vehicle dependant) to use towards the purchase, lease or finance of one eligible new Chevrolet vehicle.
- GM Card[®] — cardholders may redeem Earnings towards the total purchase price or lease down payment of an eligible new Chevrolet car, truck or crossover. Restrictions and limitations apply. For full program details, visit [gmc card.ca](#).

A WORD ABOUT THIS BROCHURE Some of the equipment shown or described throughout this brochure may be available at extra cost. We have tried to make this brochure comprehensive and factual. We reserve the right, however, to make changes at any time, without notice, in prices, colours, materials, equipment, specifications, models and availability. Specifications, dimensions, measurements, ratings and other numbers in this brochure and other printed materials provided at the dealership or affixed to vehicles are approximates based upon design and engineering drawings and prototypes and laboratory tests. Your vehicle may differ due to variations in manufacture and equipment. Since some information may have been updated since the time of printing, please check with your Chevrolet dealer for complete details. General Motors of Canada Company reserves the right to lengthen or shorten the model year for any product, for any reason, or to start and end model years at different times. Certain vehicle features may lose their usefulness over time due to obsolescence from technological changes. Unless otherwise noted, all claims based on the latest available competitive information. Excludes other GM vehicles.

ENGINES Chevrolet products are equipped with engines produced by GM Powertrain or other suppliers to GM worldwide. The engines in Chevrolet products may also be used in other GM makes and models.

ASSEMBLY Chevrolet vehicles and their components are assembled or produced by different operating units of General Motors, its subsidiaries or suppliers to GM worldwide. We sometimes find it necessary to produce Chevrolet vehicles with different or

differently sourced components than originally scheduled. Since some options may be unavailable when your vehicle is assembled, we suggest you verify that your vehicle includes the equipment you ordered and that, if there were changes, they are acceptable to you.

FLEET ORDERS Some standard content may be deleted on fleet orders. See dealer for details.

AN IMPORTANT NOTE ABOUT ALTERATIONS AND WARRANTIES Installations or alterations to the original equipment vehicle (or chassis) as distributed by General Motors are not covered by the General Motors New Vehicle Limited Warranty. The special body company, assembler, equipment installer or upfitter is solely responsible for warranties on the body or equipment and any alterations (or any effect of the alterations) to any of the parts, components, systems or assemblies installed by GM. General Motors is not responsible for the safety or quality of design features, materials or workmanship of any alterations by such suppliers.

TRADEMARKS The marks appearing in this brochure including, but not limited to, General Motors, GM, Chevrolet, the Chevrolet emblem, Traverse and their respective logos, emblems, slogans and vehicle model names and body designs; and other marks such as Find New Roads, MyLink, OnStar, the OnStar emblem, RemoteLink, SkyScape, Smart Slide and StabiliTrak are trademarks of General Motors LLC and/or General Motors of Canada Company, its subsidiaries, affiliates or licensors. Apple, iPad, iPhone, iPod, iTunes and Siri are trademarks of Apple Inc., registered in the U.S. and other countries. BlackBerry is a registered trademark of BlackBerry Limited. Bluetooth is a registered trademark of Bluetooth SIG, Inc. Bose is a registered trademark of the Bose Corporation. Facebook is a registered trademark of Facebook Inc. Gracenote is a registered trademark of Gracenote, Inc. SiriusXM, the SiriusXM logo, channel names and logos are trademarks of SiriusXM Radio Inc. Stitcher and Stitcher SmartRadio are registered trademarks of Stitcher SmartRadio, Inc. TheftLock is a registered trademark of Delphi Technologies, Inc. Twitter is a trademark of Twitter, Inc. YouTube is a registered trademark and Android and Google Play are trademarks of Google Inc. Wi-Fi is a registered trademark of Wi-Fi Alliance.

COPYRIGHT ©Copyright 2016 General Motors of Canada Company. All rights reserved. All text, images, graphics, and other materials in this brochure are subject to the copyright and other intellectual property rights of General Motors LLC and/or General Motors of Canada Company. These materials may not be reproduced, distributed or modified without the express written permission of General Motors LLC and/or General Motors of Canada Company. Printed in Canada, May 2016

SELECT VEHICLE FEATURES

TRAVERSE LS Traverse LS includes these standard features:

| |
|--|
| 281 hp 3.6L DOHC V6 engine with Direct Injection and Variable Valve Timing (VVT) |
| Oil life monitoring system |
| 6-speed automatic transmission |
| 4-wheel disc brakes with ABS, Panic Brake Assist and Hill Start Assist |
| StabiliTrak Electronic Stability Control System with Proactive Roll Avoidance |
| Traction control |
| 4-wheel independent suspension |
| 17-in. steel wheels with painted wheel covers |
| Battery run-down protection system |
| Power exterior mirrors, manual-folding, black |
| Roof rail mouldings |
| Rear spoiler |
| Rear window wiper and washer |
| Rear vision camera |
| Remote keyless entry system |
| Content theft alarm |
| 6 airbags |
| Enhanced Driver Information Centre with compass |
| Tire pressure monitoring system |
| Single-zone air conditioning with manual front climate controls and rear-seat manual controls |
| Power windows and programmable door locks |
| Tilt and telescopic adjustable steering column |
| Cruise control |
| Steering wheel-mounted Bluetooth ^{®7} cruise and audio system controls |
| Acoustic Insulation Package |
| Seating for eight with front bucket seats, 2nd-row Smart Slide flat-folding 60/40 split-bench seat and 3rd-row flat-folding 60/40 split-bench seat |
| Premium cloth seating surfaces |
| Manual 4-way driver-seat adjuster and manual lumbar adjuster |
| Rear cargo underfloor storage system |
| AM/FM stereo, CD player, auxiliary audio input jack and 165 mm (6.5 in.) colour touch-screen display |

TRAVERSE LS (CONTINUED)

| |
|---|
| SiriusXM Satellite Radio ^{™8} |
| 6-speaker audio system |
| USB port ⁹ in upper instrument panel and two charge-only USB ports in rear of centre console |
| Bluetooth ⁷ hands-free phone connectivity |
| OnStar ³ Guidance Plan for 6 months |
| OnStar Basic Plan ⁴ for 5 years including limited OnStar RemoteLink Mobile App services |
| OnStar with 4G LTE ³ and Wi-Fi [®] hotspot capability. ¹⁰ |

TRAVERSE 1LT Traverse 1LT enhances LS features with:

| |
|--|
| 18-in. machined-aluminum wheels |
| Fog lamps |
| Heated, power exterior mirrors, manual-folding, body-colour with integrated turn signals |
| Rear park assist |
| Remote vehicle starter system |
| 7 airbags (front centre airbag) |
| Leather-wrapped steering wheel |
| Power 8-way driver-seat adjuster with power lumbar adjuster |
| Heated front bucket seats |
| Simulated woodgrain on centre stack and interior trim. |

TRAVERSE 2LT Traverse 2LT enhances 1LT features with:

| |
|---|
| Power rear liftgate |
| Tri-zone automatic climate controls |
| Auto-dimming interior rear-view mirror |
| Seating for seven with 2nd-row Smart Slide captain's chairs |
| Chevrolet MyLink [™] Radio infotainment system with 165 mm (6.5 in.) colour touch-screen display |
| 10-speaker premium Bose [®] audio system |
| Bluetooth ⁷ wireless audio streaming |
| Rear-seat audio controls and headphone jacks |
| Universal home remote, 3-channel programmable transmitter. |

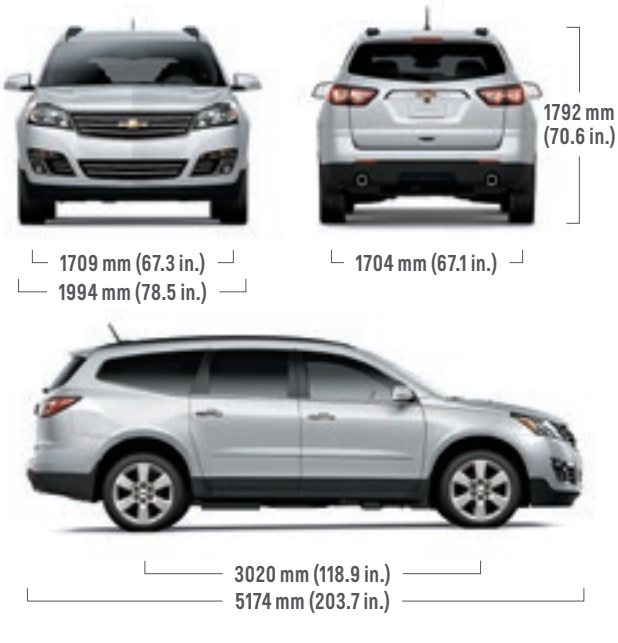
TRAVERSE LTZ Traverse LTZ enhances 2LT features with:

| |
|---|
| 288 hp 3.6L DOHC V6 engine with Direct Injection and Variable Valve Timing (VVT) |
| All-wheel drive |
| Variable-effort power steering |
| Dual-outlet exhaust with bright tips |
| 20-in. machined-aluminum wheels |
| Forward Collision Alert |
| Lane Departure Warning |
| Side Blind Zone Alert ¹² |
| Rear Cross Traffic Alert |
| Heated, power exterior mirrors, power-folding with integrated turn signals, driver-side auto-dimming and memory feature |
| Perforated leather-appointed seating in first and second rows |
| Heated and cooled front bucket seats |
| Driver-side 2-position memory |
| Power 8-way front-passenger seat adjuster with power lumbar adjuster |
| Heated steering wheel |
| Power windows with driver express-up/-down feature, passenger express-down feature |
| Simulated woodgrain door trim |
| Chevrolet MyLink [™] Radio with Navigation including 165 mm (6.5 in.) colour touch-screen display and SiriusXM NavTraffic [®] |

¹ Whichever comes first. Conditions and limitations apply. See dealer for details. ² Limit of four complimentary Lube-Oil-Filter services in total. Fluid top-offs, inspections, tire rotations, wheel alignments and balancing, etc., are not covered. ³ Visit [onstar.ca](#) for coverage map, details and system limitations. Services vary by model, conditions and geographical and technical restrictions. OnStar with 4G LTE connectivity is available on select models and in select markets. Customers will be able to access OnStar services only if they accept the OnStar User Terms and Privacy Statement and Software Terms. OnStar acts as a link to existing emergency service providers. Not all vehicles may transmit all crash data. After the trial period (if applicable), an active OnStar service plan is required. ⁴ The OnStar Basic Plan is available for 5 years from the date of delivery of the eligible new 2016 Model Year vehicle and is transferable to subsequent owners for the remaining term. The Basic Plan includes access to: (1) monthly OnStar Vehicle Diagnostics emails (capabilities vary by model); (2) Dealer Maintenance Notification; and (3) limited OnStar RemoteLink Mobile App services which include remote start (requires factory-installed and enabled remote start system), remote lock/unlock doors (requires automatic locks) and remote horn & lights activation. The OnStar RemoteLink Mobile App is available on select Apple, Android, BlackBerry and Windows devices. Visit [onstar.ca](#) for vehicle availability, coverage maps, details and system limitations. The OnStar Basic Plan does not include any Emergency Services, Automatic Crash Response, Stolen Vehicle Assistance, live Advisor service or Hands-Free Calling. These and other services are available under a paid plan. If you sell your vehicle or wish to cancel use of Basic Plan services, you must contact OnStar at 1.888.4ONSTAR (1-888-466-7827). ⁵ Conditions and limitations apply. ⁶ Subject to eligibility.

⁷ Visit [chevrolettotalconnect.ca](#) to find out which phones are compatible with the vehicle. ⁸ Available in 10 Canadian provinces and the 48 contiguous United States. Subscription sold separately after trial period. If you decide to continue your service at the end of your trial subscription, the plan you choose will automatically renew and bill at then-current rates until you call 1-877-209-0079 to cancel. Other fees and taxes will apply. All fees and programming subject to change. See SiriusXM "Terms & Conditions" and complete details at [siriusxm.ca](#). ⁹ Not compatible with all devices. ¹⁰ Devices must be WPA2 compliant. Wi-Fi devices manufactured prior to 2006 may not be compatible. Please consult your device manufacturer for information regarding the WPA2 security protocol and Wi-Fi device compatibility. Vehicle must be started or in accessory mode to access Wi-Fi. Visit [onstar.ca](#) for details and system limitations. ¹¹ Full functionality requires compatible Bluetooth and smartphone, and USB connectivity for some devices. MyLink on Traverse does not include Gracenote functionality. ¹² Before making a lane change, always check the Side Blind Zone Alert display, check the exterior and interior rear-view mirrors, look over your shoulder for vehicles and hazards and start the turn signal.

DIMENSIONS



| INTERIOR, MM (IN.) FRONT/REAR | |
|---------------------------------|---------------------------------|
| Headroom | 1026/1001/960 (40.4/39.4/37.8) |
| Legroom | 1049/935/843 (41.3/36.8/33.2) |
| Shoulder Room | 1562/1549/1463 (61.5/61.0/57.6) |
| Hip Room | 1473/1468/1227 (58.0/57.8/48.3) |
| CAPACITIES | |
| Cargo Area, L (cu. ft.) | |
| – Behind 3rd-row Seats | 691 (24.4) |
| – 3rd-row Seats Folded | 1991 (70.3) |
| – 2nd- and 3rd-row Seats Folded | 3294 (116.3) |
| Fuel Tank, L (imp. gal.) | 83 (18.3) |
| CURB WEIGHT, KG (LB.) | |
| LS FWD | 2138 (4713) |
| LS AWD | 2248 (4956) |

¹ Included with available power 8-way driver-seat adjuster. ² Visit [onstar.ca](#) for coverage maps, details and system limitations. Services vary by model, conditions and geographical and technical restrictions. OnStar with 4G LTE connectivity is available on select vehicle models and in select markets. Customers will be able to access OnStar services only if they accept the OnStar User Terms and Privacy Statement and software terms. After the trial period (if applicable), an active OnStar service plan is required. ³ The OnStar Basic Plan is available for 5 years from the date of delivery of the eligible new 2016 Model Year vehicle and is transferable to subsequent owners for the remaining term. The Basic Plan includes access to: (1) monthly OnStar Vehicle Diagnostics emails (capabilities vary by model); (2) Dealer Maintenance Notification; and (3) limited OnStar RemoteLink Mobile App services which include remote start (requires factory-installed and enabled remote start system), remote lock/unlock doors (requires automatic locks) and remote horn & lights activation. The OnStar RemoteLink Mobile App is available on select Apple, Android, BlackBerry and Windows devices. Visit [onstar.ca](#) for vehicle availability, coverage maps, details and system limitations. The OnStar Basic Plan does not include any Emergency Services, Automatic Crash Response, Stolen Vehicle Assistance, live Advisor service or Hands-Free Calling. These and other services are available under a paid plan. If you sell your vehicle or wish to cancel use of Basic Plan services, you must contact OnStar at 1.888.4ONSTAR (1-888-466-7827). ⁴ Included with available Leather and Driver Confidence Package. ⁵ Before making a lane change, always check the Side Blind Zone Alert display, check the exterior and interior rear-view mirrors, look over your shoulder for vehicles and hazards and start the turn signal. ⁶ Included with available True North Edition. ⁷ Included with available Traveller's Package. ⁸ Included with available Rear-Seat Entertainment System. ⁹ Visit [chevrolettotalconnect.ca](#) to find out which phones are compatible with the vehicle. ¹⁰ Leather-appointed seating surfaces on front and 2nd row only. 3rd row is vinyl-covered. ¹¹ Full functionality requires compatible Bluetooth and smartphone, and USB connectivity for some devices. MyLink on Traverse does not include Gracenote functionality. ¹² Data plan rates apply. ¹³ At time of printing, detailed map coverage is available for most major urban areas of the United States and for certain metropolitan areas of Canada (Vancouver, Calgary, Edmonton, Winnipeg, Windsor, London, Toronto, Ottawa, Montreal, Quebec City and Halifax). Coverage is significantly limited outside these areas. ¹⁴ Available in 10 Canadian provinces and the 48 contiguous United States. Subscription sold separately after trial period. If you decide to continue your service at the end of your trial subscription, the plan you choose will automatically renew and bill at then-current rates until you call 1-877-209-0079 to cancel. Other fees and taxes will apply. All fees and programming subject to change. See SiriusXM "Terms & Conditions" and complete details at [siriusxm.ca](#). ¹⁵ Devices must be WPA2 compliant. Wi-Fi devices manufactured prior to 2006 may not be compatible. Please consult your device manufacturer for information regarding the WPA2 security protocol and Wi-Fi device compatibility. Vehicle must be started or in accessory mode to access Wi-Fi. Visit [onstar.ca](#) for details and system limitations. ¹⁶ Not compatible with all devices. [†] All-season tires may not satisfy winter tire requirements in all regions of the country. Tires specifically designed for severe winter conditions and marked with the "winter tire" symbol may be required during certain months or in certain regions. Contact your Provincial, Municipal or local road authority for information regarding which tires are required in your particular area.

SPECIFICATIONS

| | LS | 1LT | 2LT | LTZ |
|--|----------------|-----|----------------|-----|
| SAFETY AND SECURITY | | | | |
| Airbags | | | | |
| – driver and front passenger, dual-stage, frontal with Passenger Sensing System and airbag suppression | ● | ● | ● | ● |
| – driver and front passenger, seat-mounted side-impact | ● | ● | ● | ● |
| – front-to-rear, outboard seating positions, head curtain side-impact | ● | ● | ● | ● |
| – driver inboard, seat-mounted side-impact | ○ ¹ | ● | ● | ● |
| Door locks – rear doors, child-security | ● | ● | ● | ● |
| Forward Collision Alert | – | – | – | ● |
| Lane Departure Warning | – | – | – | ● |
| OnStar ² Guidance Plan for 6 months | ● | ● | ● | ● |
| OnStar Basic Plan ³ for 5 years | ● | ● | ● | ● |
| Rear Cross Traffic Alert | – | – | ○ ⁴ | ● |
| Safety restraints | | | | |
| – 3-point belts for all seating positions, front safety belt pre-tensioners, dual-mode retractors and shoulder belt height adjusters | ● | ● | ● | ● |
| – LATCH (Lower Anchors and top Tethers for CHildren), rear seats | ● | ● | ● | ● |
| Security system – content theft alarm, audible/visible, programmable | ● | ● | ● | ● |
| Side Blind Zone Alert ⁵ | – | – | ○ ⁴ | ● |
| StabiliTrak – Electronic Stability Control System with Proactive Roll Avoidance | ● | ● | ● | ● |
| Theft-deterrent system – electronic immobilizer | ● | ● | ● | ● |
| Traction control – electronic, full-function, all-speed | ● | ● | ● | ● |
| MECHANICAL | | | | |
| Battery – maintenance-free with run-down protection | ● | ● | ● | ● |
| Brakes | | | | |
| – power, 4-wheel disc | ● | ● | ● | ● |
| – 4-wheel Anti-lock Braking System (ABS) with Panic Brake Assist and Hill Start Assist | ● | ● | ● | ● |
| Drive | | | | |
| – front-wheel (FWD) | ● | ● | ● | – |
| – full-time, active electronic all-wheel (AWD) | ○ | ○ | ○ | ● |

● STANDARD ○ AVAILABLE – NOT AVAILABLE

| | LS | 1LT | 2LT | LTZ |
|---|----|----------------|----------------|-----|
| MECHANICAL (CONTINUED) | | | | |
| Engine | | | | |
| – 3.6L DOHC V6 with VVT and Direct Injection | | | | |
| Horsepower with single exhaust – 281 @ 6300 rpm | | | | |
| Torque – 266 lb.-ft. @ 3400 rpm | ● | ● | ● | – |
| – 3.6L DOHC V6 with VVT and Direct Injection | | | | |
| Horsepower with dual exhaust – 288 @ 6300 rpm | | | | |
| Torque – 270 lb.-ft. @ 3400 rpm | – | – | – | ● |
| Engine block heater | ○ | ○ | ○ | ○ |
| Exhaust system | | | | |
| – aluminized stainless steel, single-outlet | ● | ● | ● | – |
| – aluminized stainless steel, dual-outlet with bright tips | – | – | – | ● |
| Steering | | | | |
| – power, rack-and-pinion | ● | ● | ● | – |
| – power, rack-and-pinion, variable-effort | – | ○ ⁶ | – | ● |
| Suspension – 4-wheel independent | ● | ● | ● | ● |
| Transmission – 6-speed automatic with overdrive | ● | ● | ● | ● |
| Vehicle starter system – remote | – | ● | ● | ● |
| EXTERIOR | | | | |
| Glass – solar-absorbing, tinted (deep-tinted on all windows behind front doors) | ● | ● | ● | ● |
| Liftgate | | | | |
| – rear, manual | ● | ● | – | – |
| – rear, power | – | – | ● | ● |
| Lighting | | | | |
| – daytime running lamps with exterior automatic lamp control | ● | ● | ● | ● |
| – halogen headlamps | ● | ● | ● | ● |
| – fog lamps | – | ● | ● | ● |
| Mirrors | | | | |
| – manual-folding, power remote control, black | ● | – | – | – |
| – manual-folding, power remote control, heated with integrated turn signal indicators, body-colour | – | ● | ● | – |
| – power-folding, power remote control, heated with integrated turn signal indicators, driver-side auto-dimming with memory, body-colour | – | – | ○ ⁴ | ● |

| | LS | 1LT | 2LT | LTZ |
|--|----|----------------|-----|-----|
| EXTERIOR (CONTINUED) | | | | |
| Mouldings | | | | |
| – bodyside, argent | ● | – | – | – |
| – bodyside, body-colour | – | ● | ● | – |
| – bodyside, body-colour with chrome accent | – | – | – | ● |
| Park assist – rear, obstacle detection with audible warning | – | ● | ● | ● |
| Rear vision camera | ● | ● | ● | ● |
| Roof rail mouldings – black | ● | ● | ● | ● |
| Spoiler – rear, body-colour | ● | ● | ● | ● |
| Sunroof – SkyScape, 2-panel, power front and fixed rear with sunscreen | – | ○ | ○ | ○ |
| Tires | | | | |
| – P245/70R17 all-season [†] | ● | – | – | – |
| – P255/65R18 all-season [†] | – | ● | ● | – |
| – P255/55R20 all-season [†] | – | ○ ⁵ | – | ● |
| Wheels | | | | |
| – 17" x 7.5" steel with painted wheel cover | ● | – | – | – |
| – 18" x 7.5" machined-aluminum | – | ● | ● | – |
| – 20" x 7.5" painted-aluminum | – | ○ ⁵ | – | – |
| – 20" x 7.5" machined-aluminum | – | – | – | ● |
| Windshield wipers | | | | |
| – front, 2-speed with variable delay (intermittent) | ● | ● | ● | ● |
| – rear with variable delay (intermittent) | ● | ● | ● | ● |

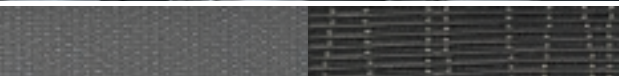
| INTERIOR | | | | |
|---|---|----------------|---|---|
| Climate control | | | | |
| – manual, single-zone front air conditioning | ● | ● | – | – |
| – automatic, tri-zone climate controls with individual settings for driver, front passenger and 2nd-/3rd-row controls for rear-seat passengers | – | ○ ⁷ | ● | ● |
| – rear, manual | ● | ● | ● | ● |
| Console – front floor with 2 cupholders, storage compartment and 12-volt accessory power outlet | ● | ● | ● | ● |
| Cruise control – electronic, steering wheel-mounted controls | ● | ● | ● | ● |
| Cupholders – 10 with 7-passenger seating/12 with 8-passenger seating | ● | ● | ● | ● |
| Defogger – electric rear-window | ● | ● | ● | ● |
| Floor mats – front, 2nd- and 3rd-row, carpeted | ● | ● | ● | ● |
| Instrumentation | | | | |
| – analogue gauges (includes speedometer, tachometer, coolant temperature, voltmeter and fuel gauges) | ● | ● | ● | ● |
| – Enhanced Driver Information Centre (includes compass, exterior temperature display, indicators for low coolant, low fuel and low oil, oil life monitoring system, tire pressure monitoring system, instantaneous and average fuel consumption, fuel range, driving time, average speed, vehicle programmable features and message centre) | ● | ● | ● | ● |
| Lighting – dome, delayed entry/exit, theatre dimming, reading lamps for front seats, 2nd-row reading lamps integrated into dome lamp, cargo area, door- and tailgate-activated switches and illuminated entry and exit feature | ● | ● | ● | ● |

| | LS | 1LT | 2LT | LTZ |
|---|----|----------------|----------------|----------------|
| INTERIOR (CONTINUED) | | | | |
| Locks | | | | |
| – power, programmable with lock-out protection | ● | ● | ● | ● |
| – remote keyless entry system, programmable with panic feature | ● | ● | ● | ● |
| Mirror | | | | |
| – rear-view, manual day/night | ● | ● | – | – |
| – rear-view, auto-dimming | – | – | ● | ● |
| Power outlets | | | | |
| – 12-volt auxiliary on instrument panel, inside front console, on rear of front console and rear cargo area | ● | ● | ● | ● |
| – 120-volt AC 3-prong household power outlet | – | ○ ⁷ | ○ ⁸ | ○ ⁸ |
| Retained accessory power | ● | ● | ● | ● |
| Steering column – tilt and telescopic adjustable | ● | ● | ● | ● |
| Steering wheel | | | | |
| – with Bluetooth [®] , ⁹ cruise and audio system controls | ● | ● | ● | ● |
| – leather-wrapped | – | ● | ● | ● |
| – heated | – | – | – | ● |
| Sunshades – LH and RH padded, illuminated vanity mirrors with extensions | ● | ● | ● | ● |
| Trim | | | | |
| – silver-painted, centre stack and interior trim | ● | – | – | – |
| – simulated woodgrain, centre stack and interior trim | – | ● | ● | ● |
| – simulated woodgrain, door trim | – | – | – | ● |
| Universal home remote – 3-channel programmable transmitter | – | ○ ⁶ | ● | ● |
| Windows | | | | |
| – power, driver express-down and rear-window lock-out features | ● | ● | ● | – |
| – power, driver express-up/-down, passenger express-down and rear-window lock-out features | – | – | ○ ⁴ | ● |

| SEATS | | | | |
|--|---|---|----------------|---|
| 8-passenger seating – includes front bucket seats with 2nd-row Smart Slide flat-folding 60/40 split-bench seat and 3rd-row flat-folding 60/40 split-bench seat | ● | ● | ○ | – |
| 7-passenger seating – includes front bucket seats with 2nd-row Smart Slide captain's chairs and 3rd-row flat-folding 60/40 split-bench seat | – | ○ | ● | ● |
| Premium cloth seating surfaces | ● | ● | ● | – |
| Leather-appointed seating surfaces ¹⁰ | – | – | ○ ⁴ | – |
| Perforated leather-appointed seating surfaces ¹⁰ | – | – | – | ● |
| Manual 4-way driver-seat adjuster and manual lumbar adjuster | ● | – | – | – |
| Power 8-way driver-seat adjuster with power lumbar adjuster | ○ | ● | ● | ● |
| Power 8-way front passenger-seat adjuster with power lumbar adjuster | – | – | ○ ⁴ | ● |
| Heated front bucket seats | – | ● | ● | – |
| Heated and cooled front bucket seats | – | – | – | ● |

| | LS | 1LT | 2LT | LTZ |
|--|----|----------------|----------------|-----|
| SEATS (CONTINUED) | | | | |
| Memory Package – includes 2-position driver seat and exterior rear-view mirrors | – | – | ○ ⁴ | ● |
| ENTERTAINMENT | | | | |
| AM/FM stereo with CD player, MP3 playback, seek up/down, auxiliary audio input jack, TheftLock [®] and 165 mm (6.5 in.) diagonal colour touch-screen display | ● | ● | – | – |
| Chevrolet MyLink [™] Radio infotainment system – includes 165 mm (6.5 in.) diagonal colour touch-screen display, AM/FM stereo with CD player, MP3 playback, seek up/down, auxiliary audio input jack, TheftLock, digital clock, personal media connectivity by Bluetooth [®] to vehicle audio system; voice-activated technology for audio, phone, phone book and music selection and Stitcher SmartRadio [®] ¹² compatibility | – | ○ ⁶ | ● | – |
| Chevrolet MyLink [™] Radio with Navigation ¹³ and SiriusXM NavTraffic [™] ¹⁴ | – | – | ○ | ● |
| OnStar ² with 4G LTE and Wi-Fi [®] hotspot capability ¹⁵ | ● | ● | ● | ● |
| 6-speaker audio system | ● | ● | – | – |
| 10-speaker premium Bose [®] audio system | – | – | ● | ● |
| Bluetooth [®] | | | | |
| – hands-free phone connectivity | ● | ● | ● | ● |
| – wireless audio streaming | – | ○ ⁶ | ● | ● |
| SiriusXM Satellite Radio [™] ¹⁴ | ● | ● | ● | ● |
| USB port ¹⁶ in upper instrument panel and 2 charge-only USB ports in rear of centre console | ● | ● | ● | ● |
| Rear-Seat Entertainment System – includes rear-seat DVD player, remote control, overhead display, 2 sets of 2-channel wireless infrared headphones, auxiliary audio/video input jacks, Bose 10-speaker 5.1 surround sound system and 120-volt AC 3-prong household power outlet | – | ○ ⁷ | ○ | ○ |
| Rear-seat audio controls and headphone jacks | – | ○ ⁷ | ● | ● |
| AVAILABLE PACKAGES | | | | |
| Leather and Driver Confidence Package – includes leather-appointed seating, ¹⁰ power 8-way front passenger seat adjusters with power lumbar adjuster, Memory Package, Side Blind Zone Alert ⁵ , Rear Cross Traffic Alert, power driver express-up and passenger express-down window features and power-folding exterior mirrors with memory | – | – | ○ | – |
| Trailer Towing Package – 2359 kg (5200 lb.) capability, includes hitch receiver platform, 50 mm (2 in.) hitch receiver, 7-wire trailering wire harness with sealed connector and heavy-duty cooling system | ○ | ○ | ○ | ○ |
| Traveller's Package – includes automatic tri-zone climate controls, Chevrolet MyLink [™] Radio, Rear-Seat Entertainment System and an additional 9 months of SiriusXM Satellite Radio ¹⁴ | – | ○ | – | – |
| True North Edition – includes Chevrolet MyLink [™] Radio, universal home remote 3-channel programmable transmitter, P255/55R20 all-season tires [†] ; 20" x 7.5" painted-aluminum wheels and variable-effort power steering | – | ○ | – | – |

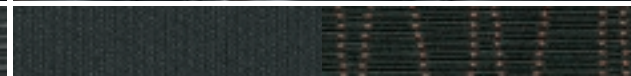
INTERIOR FABRICS



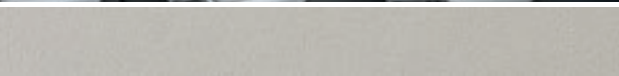
Dark Titanium-Colour/Light Titanium-Colour Premium Cloth^{1,2}



Ebony Premium Cloth²



Ebony/Saddle Up Premium Cloth^{2,3}



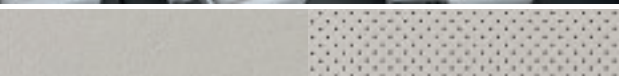
Dark Titanium-Colour/Light Titanium-Colour Leather Appointments⁴



Ebony Leather Appointments⁴



Ebony/Saddle Up Leather Appointments^{3,4}



Dark Titanium-Colour/Light Titanium-Colour Perforated Leather Appointments⁵



Ebony Perforated Leather Appointments⁵



Ebony/Saddle Up Perforated Leather Appointments⁵

¹ Standard on LS. ² Standard on 1LT and 2LT. ³ Not available with 8-passenger seating. ⁴ Available on 2LT. ⁵ Standard on LTZ. ⁶ Not available on LS. ⁷ Available at extra cost.

EXTERIOR COLOURS



17U – SILVER ICE METALLIC



GAZ – SUMMIT WHITE



GB8 – MOSAIC BLACK METALLIC⁶



GWT – CHAMPAGNE SILVER METALLIC⁶



GXG – TUNGSTEN METALLIC



G1E – SIREN RED TINTCOAT^{6,7}



G1M – BLUE VELVET METALLIC



G1W – IRIDESCENT PEARL TRICOAT^{6,7}



G7U – SABLE METALLIC^{6,7}

WHEELS



17" Steel with Painted Wheel Cover
(Standard on LS)



18" Machined-Aluminum
(Standard on 1LT and 2LT)



20" Painted-Aluminum
(Available on 1LT;
requires True North Edition)



20" Machined-Aluminum
(Standard on LTZ)